

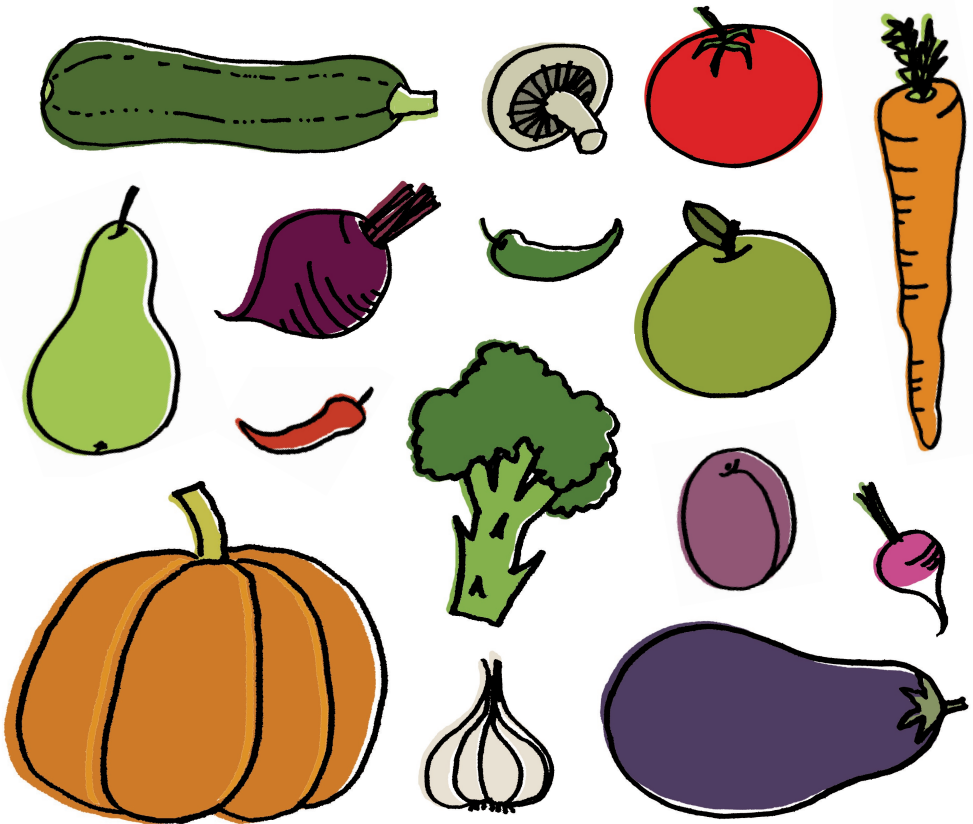
# Buy fresh, buy local

---

Join Organiclea's Box Scheme, visit our stalls or the Hornbeam Café and enjoy local organic fruit and vegetables every week.

---

[www.organiclea.org.uk](http://www.organiclea.org.uk)



---

The Hornbeam Centre,  
458 Hoe Street, Walthamstow  
020 8558 6880



## Join the midweek Box Scheme

Pay around £5 or £10 a week and get your shopping done for you! Choose the size of fruit or vegetable bag that suits your budget and enjoy ultra-local produce every week. There are a range of pick-up options: the Hornbeam Centre, Hawkwood Growing Site in Chingford, or other local deliveries. Pop in to the Hornbeam on a Wednesday to see the bags, visit our website, or call **07588 422263**.

---

## Visit the Saturday Stall

The market stall outside the Hornbeam Centre on Saturdays sells organic and ultra-local sustainably grown fruit and vegetables plus homemade bread, jams and preserves.  
**Saturday 10am-3pm**

---

## Eat at the Café

...Or you can let someone else do the cooking! The Hornbeam café serves healthy, tasty vegetarian meals using our local and ultra-local produce. We have a varied menu of seasonally-inspired main meals, plus delicious cakes, juices and fair-trade teas and coffee.  
**Wednesday to Saturday 10.30am-5pm**

---

**Organiclea's food distribution is based at:** The Hornbeam Centre, 458 Hoe Street, Walthamstow E17 9AH (near Bakers Arms junction)  
**020 8558 6880**

**[www.organiclea.org.uk](http://www.organiclea.org.uk)**

---

The Hornbeam Centre is an environmental community centre organised and run by its users. To find out about using the centre visit **[www.hornbeam.org.uk](http://www.hornbeam.org.uk)**

## Our Produce...

is supplied by Soil Association certified organic farms and by ultra-local London growers sharing their surplus – from gardens and allotments in Leyton, Walthamstow and our own growing site in Chingford. Ultra-local producers pledge to use Wholesome Food Association principles (an alternative to organic certification for small-scale local growing).

## Do you want to share your surplus?

If you have a garden or allotment and want to be part of Cropshare, please contact us.

To be part of the growing process at our **Hawkwood Site in Chingford** please get in touch – there are regular work days and learning opportunities.

---

## Why Organic?

- It's a healthier way of producing food
- It's better for the planet
- It encourages bugs, birds and bees

Organic farming works with nature, and the soil's natural fertility, instead of using oil-based fertilisers and chemicals.

---

## Why Organiclea?

- You will know the people that grow your food
- You'll be part of a local community economy
- You'll be challenging the current unsustainable food system

We aim to be more than just 'local'. We are a community food project inspired by the connections that real food creates.

---